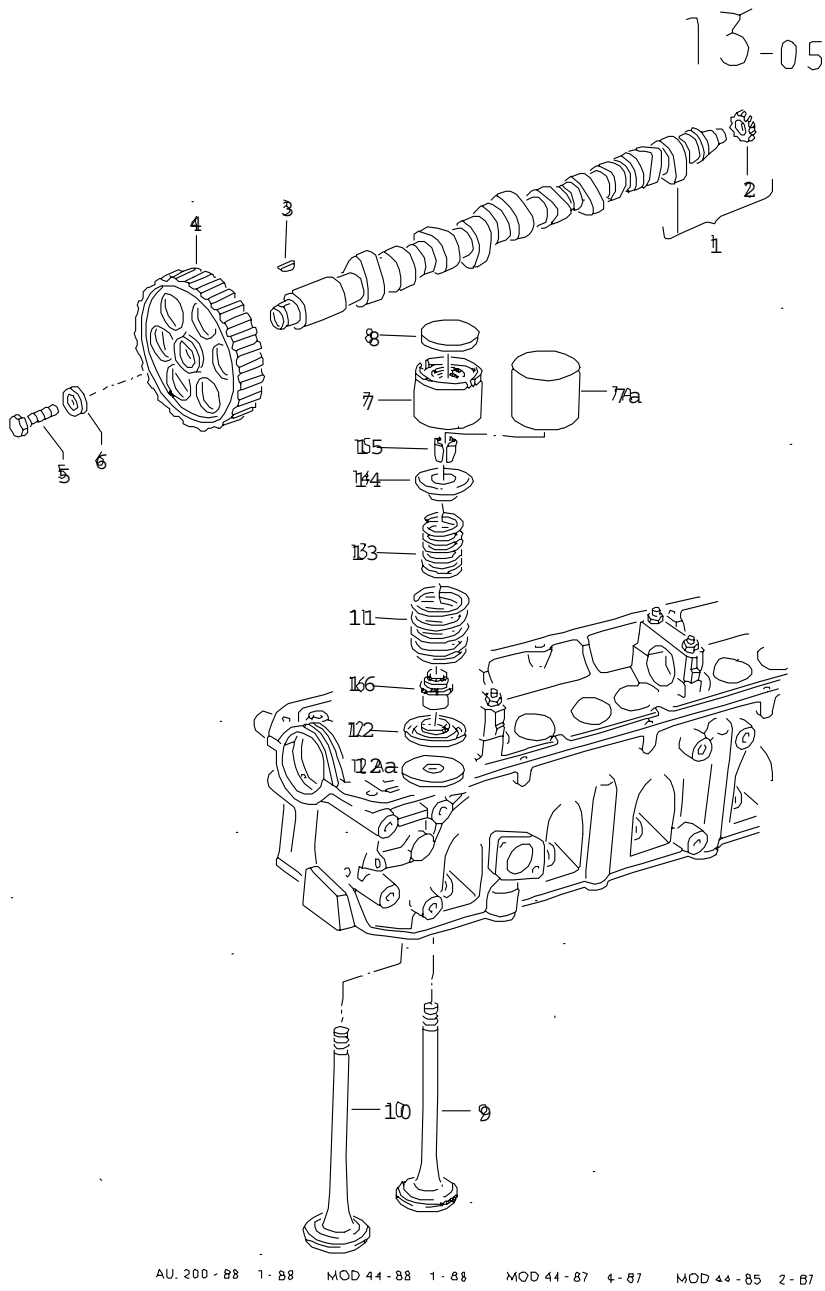




ETKA



Model	Year	MG:	SG:	Illustration	Restrictions	Update		
QUAT	83	1	09	7-00		525	21:32	18.04.2005





ETKA



Model QUAT	Year 83	MG: 1	SG: 09	Illustration 7-00	Restrictions	Update 525	21:32	18.04.2005
---------------	------------	----------	-----------	----------------------	--------------	---------------	-------	------------

Pos	Part Number	Name	Remarks	Qty	Model
		camshaft, valves			WX
(1)	035 109 021 AS	camshaft		1	
2	035 109 109	drive gear for distributor F 85-B-900 159>>		1	
3	N 012 708 2	woodruff key	4X5	1	
4	049 109 111 C	toothed belt pulley			
5	N 010 137 1	screw, hex. hd.	M12X1,5X35	1	
6	056 109 143	washer	12,5X28X6	1	
7	056 109 311 A	cam follower		10	
8	056 109 561	adjusting washer	3,3	X	
(8)	056 109 562	adjusting washer	3,35	X	
(8)	056 109 563	adjusting washer	3,4	X	
(8)	056 109 564	adjusting washer	3,45	X	
(8)	056 109 565	adjusting washer	3,5	X	
(8)	056 109 566	adjusting washer	3,55	X	
(8)	056 109 567	adjusting washer	3,6	X	
(8)	056 109 568	adjusting washer	3,65	X	
(8)	056 109 569	adjusting washer	3,7	X	
(8)	056 109 570	adjusting washer	3,75	X	
(8)	056 109 571	adjusting washer	3,8	X	
(8)	056 109 572	adjusting washer	3,85	X	
(8)	056 109 573	adjusting washer	3,9	X	
(8)	056 109 574	adjusting washer	3,95	X	
(8)	056 109 575	adjusting washer	4	X	
(8)	056 109 576	adjusting washer	4,05	X	
(8)	056 109 577	adjusting washer	4,1	X	
(8)	056 109 578	adjusting washer	4,15	X	



ETKA



Model QUAT	Year 83	MG: 1	SG: 09	Illustration 7-00	Restrictions	Update 525	21:32	18.04.2005
---------------	------------	----------	-----------	----------------------	--------------	---------------	-------	------------

Pos	Part Number	Name	Remarks	Qty	Model
(8)	056 109 579	adjusting washer	4,2	X	
(8)	056 109 580	adjusting washer	4,25	X	
9	035 109 601 F	intake valve	98,7		
10	035 109 611 H	exhaust valve	98,5	5	
11	078 109 623 A	spring - valve	outer	10	
12	056 109 629 A	spring seat	lower	10	
13	078 109 633 A	spring - valve	inner	10	
(14)	049 109 641 A	spring seat F 85-B-901 533>>	upper	10	
(15)	113 109 651 A	cotter, split F 85-B-901 533>>		20	
16	026 109 675	seal - valve stem	8MM	10	
		- - - E N D - - -			