

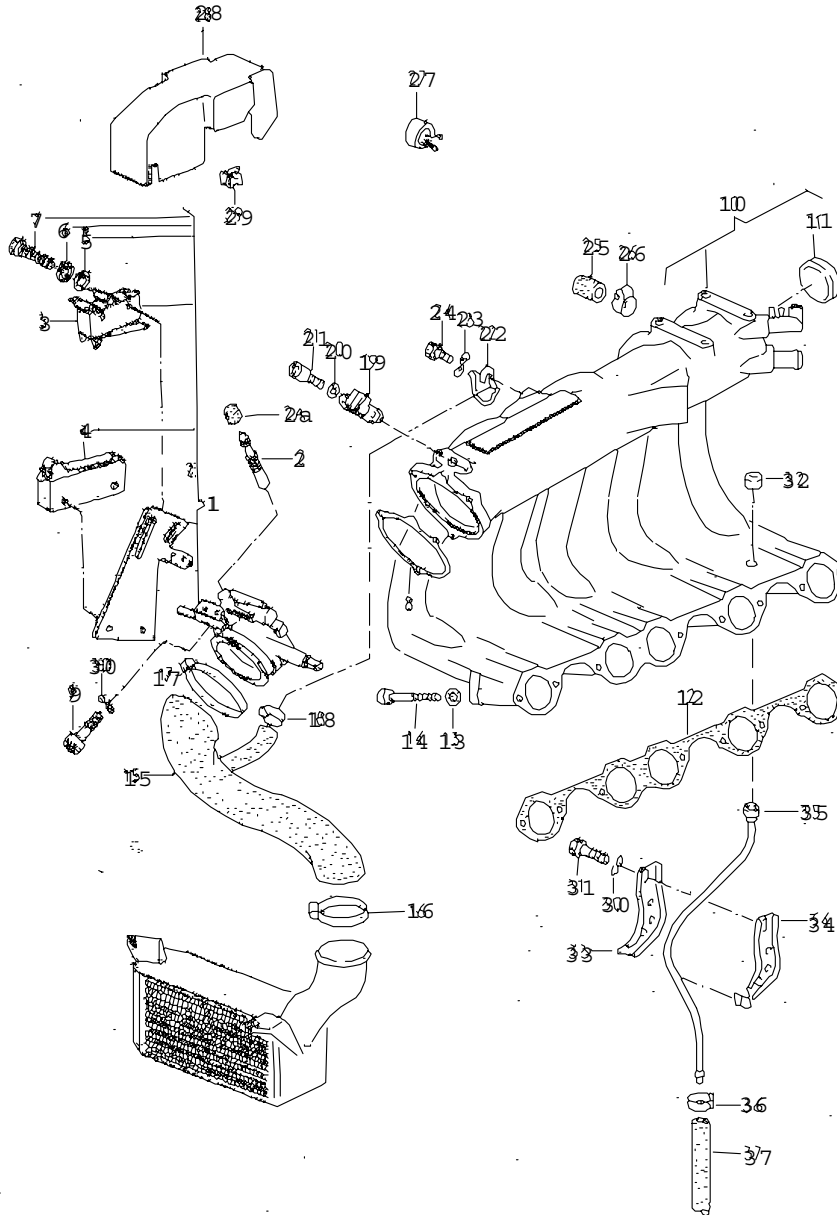


# ETKA



Model	Year	MG:	SG:	Illustration	Restrictions	Update		
QUAT	83	1	33	14-00		525	21:36	18.04.2005

14



EP 46 2--88



# ETKA



Model QUAT	Year 83	MG: 1	SG: 33	Illustration 14-00	Restrictions	Update 525	21:36	18.04.2005
---------------	------------	----------	-----------	-----------------------	--------------	---------------	-------	------------

Pos	Part Number	Name	Remarks	Qty	Model
		throttle body intake manifold temperature sensor			WX
1	035 133 063 FS	throttle body		1	
2	035 133 432	adjusting screw		1	
3	857 906 277	switch for full throttle enrichment F 85-D-900 582>>		1	
4	411 927 211	switch F >> 85-D-900 581		1	
(4)	443 906 277 B	switch F 85-D-900 582>>		1	
5	N 011 553 6	washer	3,2X6X0,5	4	
6	N 012 003 2	lock ring	B3	4	
7	N 014 154 1	fillister hd. screw	M3X18	4	
8	* 034 133 073 G	gasket		1	
9	N 010 217 10	screw, hex. hd.	M6X20 also use: N 012 226 5	3 3	
(10)	035 133 201 AJ	intake manifold		1	
11	059 103 113	sealing cap	36,6	1	
12	* 034 129 717 M	gasket		1	
13	N 011 558 11	washer	8,4X15X1,6	8	
14	N 014 711 2	bolt, with hex. socket hd.	M8X65	8	
15		pressure hose see illustration:	20-10 NR.18		
16	N 024 522 3	clamp	LA60-80	1	
17	N 024 518 3	clamp	AL70-90	1	
18	N 102 582 01	clamp	AL12-22	2	
19	035 905 379 B	temperature sensor		1	
20	N 011 557 2	washer	6,4X11X1,6	2	



# ETKA



Model QUAT	Year 83	MG: 1	SG: 33	Illustration 14-00	Restrictions	Update 525	21:36	18.04.2005
---------------	------------	----------	-----------	-----------------------	--------------	---------------	-------	------------

Pos	Part Number	Name	Remarks	Qty	Model
21	N 014 702 10	bolt, with hex. socket hd.	M6X15	2	
22	035 145 169	bracket		1	
23	N 012 226 5	spring washer	B6X12X0,5	1	
24	N 010 212 26	screw, hex. hd.	M6X12	1	
25	049 133 335	cap	10MM	1	
26	N 024 528 1	clamp	LC8-12	1	
27	803 971 847	cable terminal		1	
28	035 133 105	cap F >> 85-D-902 500		1	
(28)	035 133 105 A	cap F 85-E-900 001>>		1	
(28)	035 133 105 B	cap F 85-E-900 001>>		1	
29	191 819 145 A	clamp		1	
30	N 012 226 5	spring washer	B6X12X0,5	X	
- - - E N D - - -					